

Commercial and Recreational Shellfish Growing Areas

January 1, 2024

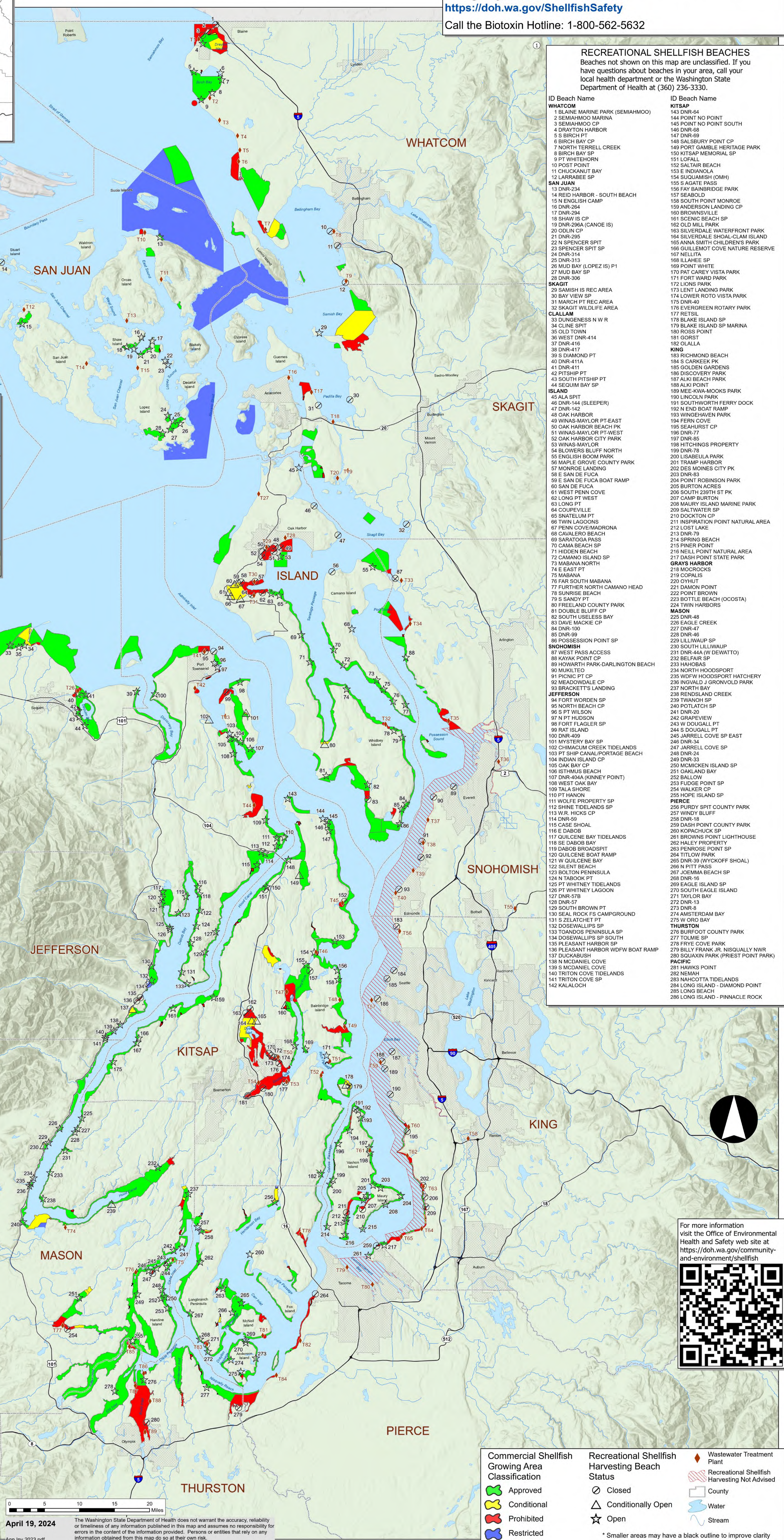
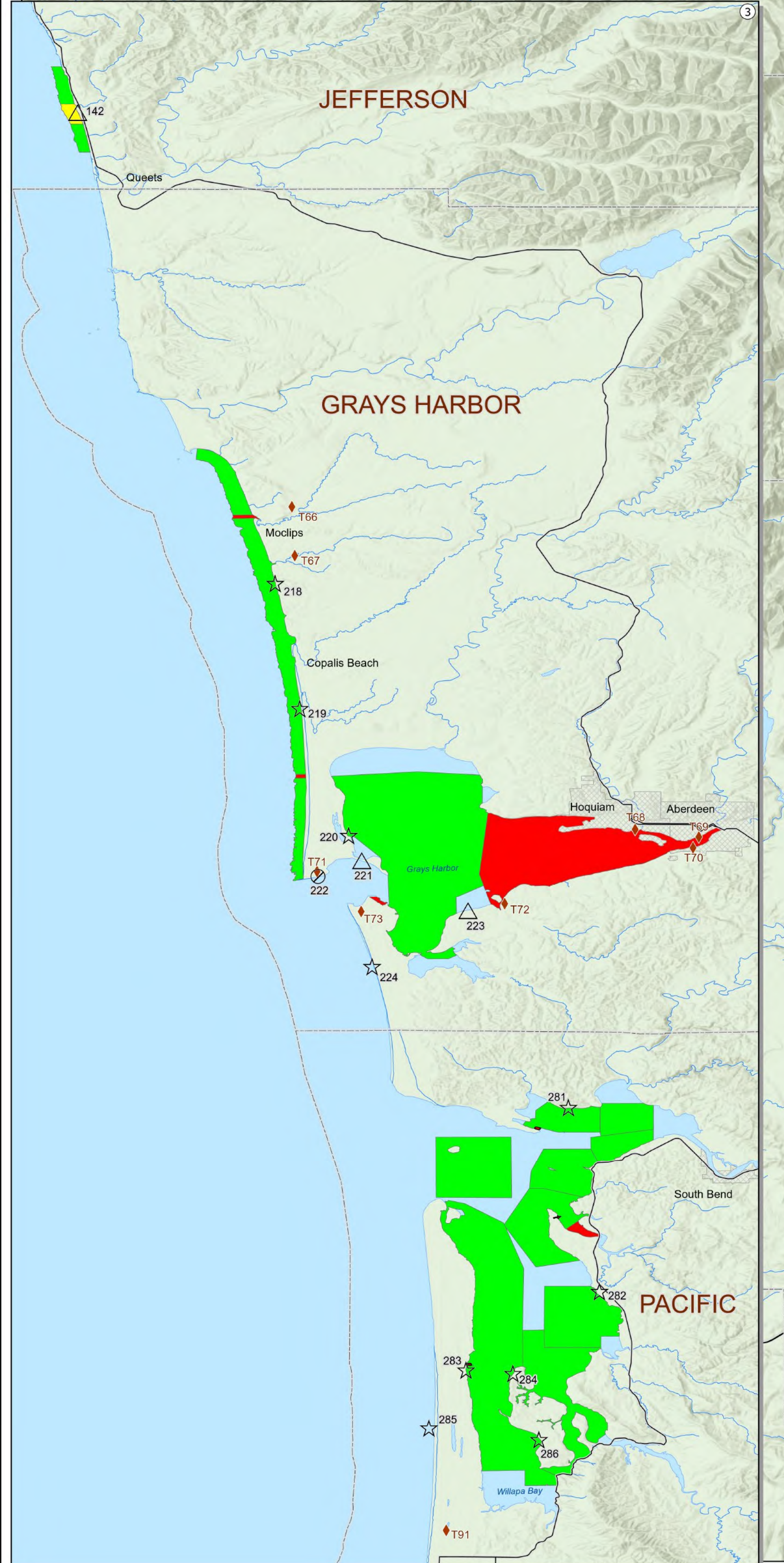
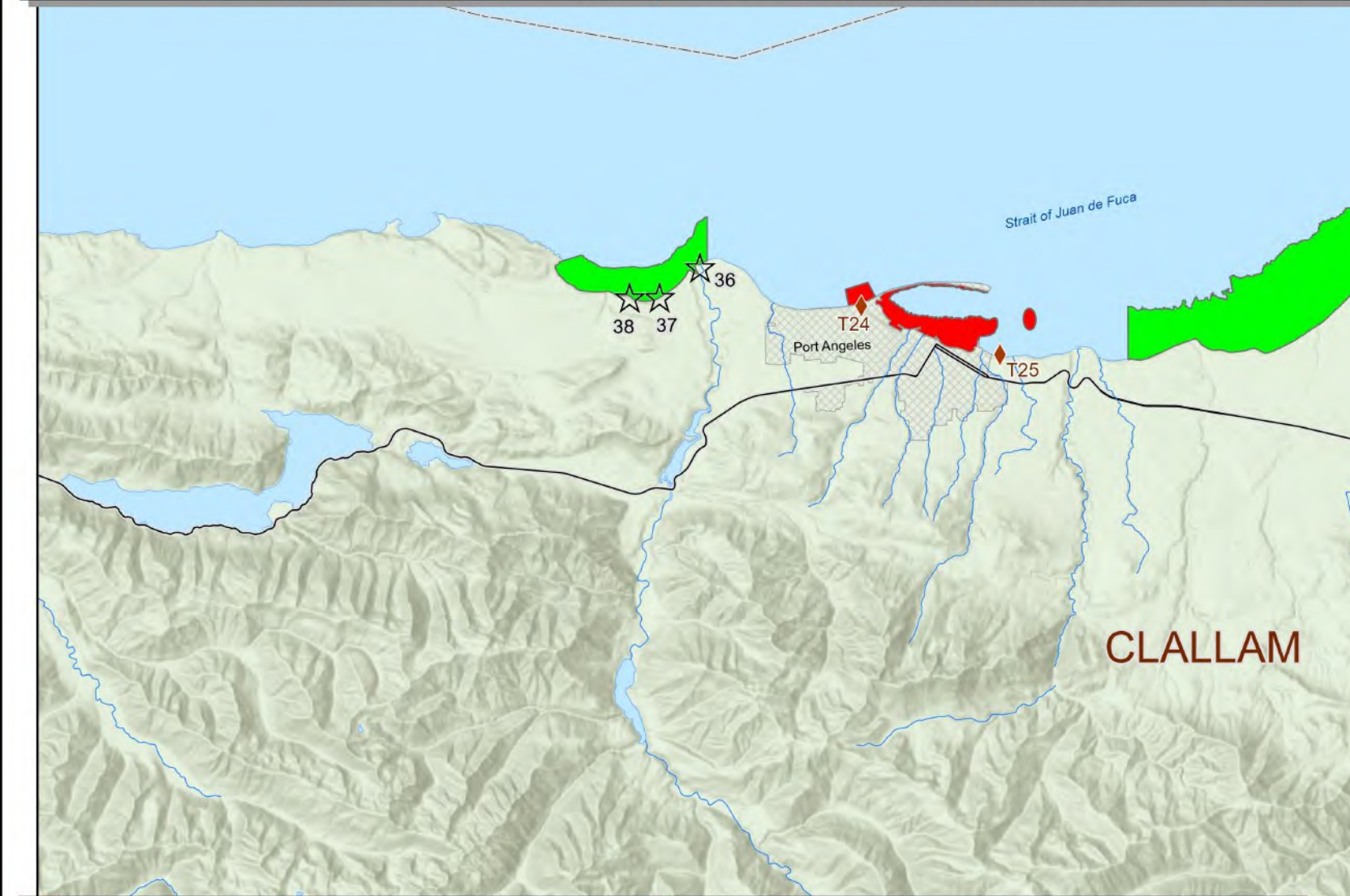
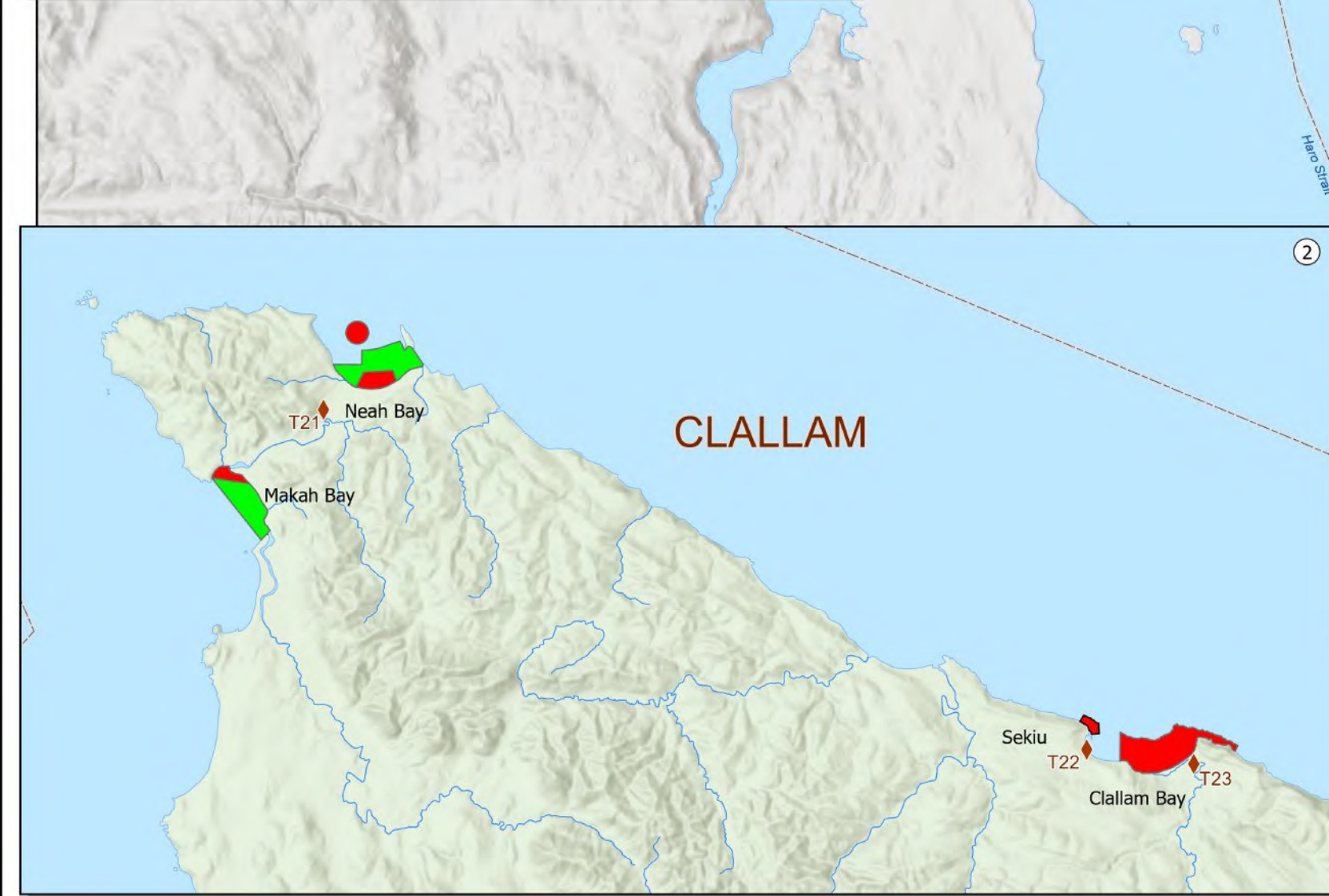
Consumers should note:
For the most updated information on commercial shellfish classifications, visit the Washington State Department of Health interactive map based viewer:
<https://fortress.wa.gov/doh/oswpviewer>

For recreational shellfish harvest information, including emergency biotoxin closures, visit:
<https://doh.wa.gov/ShellfishSafety>

Call the Biotoxin Hotline: 1-800-562-5632

WASTEWATER TREATMENT PLANTS

- | | |
|-----------------------------------|-------------------------------------|
| WHATCOM | KITSAP |
| T1 BLAINE | T45 KINGSTON |
| T2 BIRCH BAY | T46 SUQUAMISH |
| T3 BP CHERRY POINT | T47 CENTRAL KITSAP WWTP |
| T4 INTALCO ALUMINUM CORP FERNDALE | T48 MESSENGER HOUSE |
| T5 PHILLIPS 66 FERNDALE REFINERY | T49 WINSLOW |
| T6 SANDY POINT-LUMMI TRIBE | T50 BREMERTON EASTSIDE CSO |
| T7 GOOSEBERRY POINT-LUMMI TRIBE | T51 KITSAP #7, FORT WARD |
| T8 BELLINGHAM | T52 MANCHESTER |
| T9 LAKEVIEW | T53 PORT ORCHARD |
| T10 EASTSOUND DISTRICT | T54 BREMERTON |
| T11 ROSARIO RESORT | KING |
| T12 ROCHE HARBOR | T55 BRIGHTWATER |
| T13 ORCAS VILLAGE | T56 CARKEEK CSO |
| T14 FRIDAY HARBOR | T57 WEST POINT (METRO) |
| T15 FISHERMEN BAY SEWER DISTRICT | T58 ALKI POINT (METRO CSOS) |
| SAN JUAN | T59 SALMON CREEK |
| T16 ANACORTES | T60 MILLER CREEK |
| T17 TESORO / SHELL OIL | T61 VASHON SEWER DISTRICT |
| T18 NORTHERN LIGHTS CASINO | T62 DES MOINES SEWER DISTRICT |
| T19 LA COMER | T63 RECONDO |
| T20 SHELTER BAY | T64 RECONDO |
| CLALLAM | T65 LAKOTA |
| T21 MAKAH | GRAYS HARBOR |
| T22 SEKIU | T66 QUIN-AH-LETT VILLAGE |
| T23 CLALLAM BAY/DOC | T67 PACIFIC BEACH |
| T24 NIPON PAPER INDUSTRIES | T68 HOQUIAM |
| T25 PORT ANGELES | T69 ABERDEEN |
| T26 SEQUIM | T70 COSMO SPECIALTY FIBERS |
| ISLAND | T71 OCEAN SHORES |
| T27 AULT FIELD | T72 OCEAN SPRAY |
| T28 SEAPLANE STATION - OAK HARBOR | T73 WESTPORT |
| T29 OAK HARBOR | MASON |
| T30 PENN COVE SEWER DISTRICT | T74 ALDERBROOK INN |
| T31 COUPEVILLE | T75 HARTSTONE POINT |
| T32 SHELLEY | T76 SHELLEY |
| SNOHOMISH | T77 SHELLEY |
| T33 STANWOOD | T78 GIG HARBOR |
| T34 WARM BEACH CAMPGROUND | T79 TACOMA #3 |
| T35 TULALIP TRIBE | T80 TACOMA CENTRAL |
| T36 EVERETT | T81 MCNEIL ISLAND CORRECTION CENTER |
| T37 MUKILTEO WATER DISTRICT | T82 CHAMBERS CREEK |
| T38 ALDERWOOD | T83 TAYLOR BAY ESTATES |
| T39 LYNNWOOD | T84 JOINT BASE LEWIS-MCCHORD |
| T40 EDMONDS | THURSTON |
| T41 PORT TOWNSEND | T85 CARLYON BEACH |
| T42 PORT TOWNSEND PAPER | T86 BOSTON HARBOR |
| T43 NAVAL MAGAZINE INDIAN ISLAND | T87 TAMOSHAN |
| T44 PORT LUDLOW | T88 SEASHORE VILLA MOBILE HOME |
| | T89 LOTT CLEAN WATER ALLIANCE |
| | PACIFIC |
| | T90 WILLAPA REGIONAL WWTP |
| | T91 LONG BEACH |



- ### RECREATIONAL SHELLFISH BEACHES
- Beaches not shown on this map are unclassified. If you have questions about beaches in your area, call your local health department or the Washington State Department of Health at (360) 236-3330.
- | | |
|------------------------------------|------------------------------------|
| ID Beach Name | ID Beach Name |
| WHATCOM | KITSAP |
| 1 BLAINE MARINE PARK (SEMAHMOO) | 143 DNR-64 |
| 2 SEMAHMOO MARINA | 144 POINT NO POINT |
| 3 SEMAHMOO CP | 145 POINT NO POINT SOUTH |
| 4 DRAYTON HARBOR | 146 DNR-68 |
| 5 BIRCH BAY CP | 147 DNR-69 |
| 6 BIRCH BAY CP | 148 SALBURY POINT CP |
| 7 NORTH TERRELL CREEK | 149 FORT GAMBLE HERITAGE PARK |
| 8 BIRCH BAY SP | 150 KITSAP MEMORIAL SP |
| 9 PT WHITEHORN | 151 LOFALL |
| 10 POST POINT | 152 SALT AIR BEACH |
| 11 CHUCKANUT BAY | 153 E INDIANOLA |
| 12 LARABEE SP | 154 SUQUAMISH (OMH) |
| SAN JUAN | 155 S AGATE PASS |
| 13 DNR-234 | 156 FAY GANBRIDGE PARK |
| 14 REID HARBOR - SOUTH BEACH | 157 SEAROLD |
| 15 N ENGLISH CAMP | 158 SOUTH POINT MONROE |
| 16 DNR-284 | 159 ANDERSON LANDING CP |
| 17 DNR-294 | 160 BROWNVILLE |
| 18 SHAW IS CP | 161 SCENIC BEACH SP |
| 19 DNR-296A (CANOE IS) | 162 OLD MILL PARK |
| 20 COULIN CP | 163 SILVERDALE WATERFRONT PARK |
| 21 DNR-295 | 164 SILVERDALE SHOAL-CLAM ISLAND |
| 22 N SPENCER SPIT | 165 ANNA SMITH CHILDREN'S PARK |
| 23 SPENCER SPIT SP | 166 GUILLEMOT COVE NATURE RESERVE |
| 24 DNR-314 | 167 NELLITA |
| 25 DNR-313 | 168 BLAAHE SP |
| 26 MUD BAY (LOPEZ IS) P1 | 169 POINT WHITE |
| 27 MUD BAY SP | 170 PAT CAREY VISTA PARK |
| 28 DNR-306 | 171 FORT WARD PARK |
| SKAGIT | 172 LONG PARK |
| 29 SAMISH IS REC AREA | 173 LENT LANDING PARK |
| 30 BAY VIEW SP | 174 LOWER ROTO VISTA PARK |
| 31 MARCH PT REC AREA | 175 DNR-306 |
| 32 SKAGIT WILDLIFE AREA | 176 EVERGREEN ROTARY PARK |
| CLALLAM | 177 RETSIL |
| 33 BUSINESS N W R | 178 BLAKE ISLAND SP |
| 34 CLINE SPIT | 179 BLAKE ISLAND SP MARINA |
| 35 OLD TOWN | 180 ROSS POINT |
| 36 DNR-414 | 181 GORST |
| 37 DNR-416 | 182 ALALLA |
| 38 DNR-417 | KING |
| 39 S DIAMOND PT | 183 RICHMOND BEACH |
| 40 DNR-411A | 184 S CARKEEK PK |
| 41 DNR-411 | 185 GOLDEN GARDENS |
| 42 RITSCH | 186 DISCOVERY PARK |
| 43 SOUTH PITSPH PT | 187 ALKI BEACH PARK |
| 44 SEQUIM BAY SP | 188 ALKI POINT |
| ISLAND | 189 KEEWA-MOOKS PARK |
| 45 ALA SPIT | 190 LINCOLN PARK |
| 46 DNR-144 (SLEEPER) | 191 SOUTHWORTH FERRY DOCK |
| 47 OAK HARBOR BEACH PK | 192 N END BOAT RAMP |
| 48 OAK HARBOR | 193 WINGEHEVEN PARK |
| 49 WINAS-MAYLOR PT-EAST | 194 FERN COVE |
| 50 OAK HARBOR BEACH PK | 195 SEAHURST CP |
| 51 WINAS-MAYLOR PT-WEST | 196 DNR-77 |
| 52 OAK HARBOR CITY PARK | 197 DNR-85 |
| 53 WINAS-MAYLOR | 198 HITCHINGS PROPERTY |
| 54 BLOWERS BLUFF NORTH | 199 DNR-78 |
| 55 ENGLISH BOOM PARK | 200 LISABELLA PARK |
| 56 MARLE GROVE COUNTY PARK | 201 TRAIPI HARBOR |
| 57 MONRIE LANDING | 202 DES MOINES CITY PK |
| 58 E SAN DE FUCA | 203 DNR-83 |
| 59 S SAN DE FUCA BOAT RAMP | 204 POINT ROBINSON PARK |
| 60 SAN DE FUCA | 205 BURTON ACRES |
| 61 WEST PENN COVE | 206 SOUTH 239TH ST PK |
| 62 LONG PT WEST | 207 CAMP BURTON |
| 63 LONG PT | 208 MAURY ISLAND MARINE PARK |
| 64 COUPEVILLE | 209 SALTWATER SP |
| 65 SNAIETUM PT | 210 DOCKTON CP |
| 66 TWIN LACONS | 211 INSPIRATION POINT NATURAL AREA |
| 67 PENN COVE/MADRONA | 212 LOST LAKE |
| 68 CAVALERO BEACH | 213 DNR-79 |
| 69 CAMA BEACH SP | 214 SPRING BEACH |
| 70 CAMA BEACH SP | 215 PINER POINT |
| 71 HIDDEN BEACH | 216 NEILL POINT NATURAL AREA |
| 72 CAMANO ISLAND SP | 217 DASH POINT STATE PARK |
| 73 MABANA NORTH | GRAYS HARBOR |
| 74 E EAST PT | 218 MCCRACKEN |
| 75 MABANA | 219 COPALIS |
| 76 FAR SOUTH MABANA | 220 OYHUT |
| 77 FURTHER NORTH CAMANO HEAD | 221 DAMON POINT |
| 78 SUNRISE BEACH | 222 SOUTH LULLWALP |
| 79 S SANDY PT | 223 BOTTLE BEACH (OCOSTA) |
| 80 FRELAND COUNTY PARK | 224 TWIN HARBORS |
| 81 MURPHY BLUFF CP | MASON |
| 82 SOUTH USELESS BAY | 225 DNR-48 |
| 83 DAVE MACKIE CP | 226 EAGLE CREEK |
| 84 DNR-100 | 227 DNR-47 |
| 85 DNR-99 | 228 DNR-46 |
| 86 POSSESSION POINT SP | 229 LULLWALP SP |
| SNOHOMISH | 230 SOUTH LULLWALP |
| 87 WEST PASS ACCESS | 231 DNR-44A (W DEWATTO) |
| 88 KAYAK POINT CP | 232 BELFAIR SP |
| 89 HOWARTH PARK-DARLINGTON BEACH | 233 KOPACHUCK SP |
| 90 MUKILTEO | 234 NORTH HOODSPORT |
| 91 PICNIC PT CP | 235 WDFW HOODSPORT HATCHERY |
| 92 MEADOWDALE CP | 236 RONALD J GROWNOLD PARK |
| 93 BRACKETT'S LANDING | 237 NORTH BAY |
| 94 FORT WARDEN SP | 238 RENOSLAND CREEK |
| 95 NORTH BEACH CP | 239 TIANONG SP |
| 96 S PT WILSON | 240 POTLATCH SP |
| 97 PT HUDSON | 241 DNR-20 |
| 98 FORT FLAGLER SP | 242 GRAPEVIEW |
| 99 RAY ISLAND | 243 W DOUGALL PT |
| 100 DNR-409 | 244 S DOUGALL PT |
| 101 MYSTERY BAY SP | 245 JARRELL COVE SP EAST |
| 102 CHIAMCUM CREEK TIDELANDS | 246 DNR-34 |
| 103 PT SHIP CANAL/PORTAGE BEACH | 247 JARRELL COVE SP |
| 104 INDIAN ISLAND CP | 248 DNR-24 |
| 105 OAK BAY CP | 249 DNR-33 |
| 106 OMBUS BEACH | 250 MCMICKEN ISLAND SP |
| 107 DNR-404A (KINNEY POINT) | 251 OAKLAND BAY |
| 108 WEST OAK BAY | 252 BALLOW |
| 109 TALA SHORE | 253 FUDGE POINT SP |
| 110 PT HANON | 254 WALKER CP |
| 111 WOLFE PROPERTY SP | 255 HOPE ISLAND SP |
| 112 SHINE TIDELANDS SP | PIERCE |
| 113 W R HICKS CP | 256 PURDY SPIT COUNTY PARK |
| 114 DNR-59 | 257 WINDY BLUFF |
| 115 CASE SHOAL | 258 DNR-18 |
| 116 DABOB | 259 DASH POINT COUNTY PARK |
| 117 OUILCENE BAY TIDELANDS | 260 KOPACHUCK SP |
| 118 SE DABOB BAY | 261 BROWNS POINT LIGHTHOUSE |
| 119 DABOB BROADSPIT | 262 HALCY PROPERTY |
| 120 OUILCENE BOAT RAMP | 263 FRENCH POINT SP |
| 121 W OUILCENE BAY | 264 TITLOW PARK |
| 122 SILENT BEACH | 265 DNR-39 (WYCKOFF SHOAL) |
| 123 BOLTON PENINSULA | 266 N PITTS PASS |
| 124 N TABOOK PT | 267 JOEMMA BEACH SP |
| 125 PT WHITNEY TIDELANDS | 268 DNR-16 |
| 126 PT WHITNEY LAGOON | 269 EAGLE ISLAND SP |
| 127 DNR-57B | 270 SOUTH EAGLE ISLAND |
| 128 DNR-57 | 271 TAYLOR BAY |
| 129 SOUTH BROWN PT | 272 DNR-13 |
| 130 SEAL ROCK FS CAMPGROUND | 273 DNR-8 |
| 131 S ZELTCHET PT | 274 AMSTERDAM BAY |
| 132 DOSEWALLIPS SP | 275 W ORO BAY |
| 133 TOANDOS PENINSULA SP | 276 BURFOOT COUNTY PARK |
| 134 DOSEWALLIPS SP SOUTH | 277 TOLMIE SP |
| 135 PLEASANT HARBOR SP | 278 FRYE COVE PARK |
| 136 PLEASANT HARBOR WDFW BOAT RAMP | 279 BILLY FRANK JR. NISQUALY NWR |
| 137 DUCKBUSH | 280 PACIFIC (PRIEST POINT PARK) |
| 138 N MCDANIEL COVE | PACIFIC |
| 139 S MCDANIEL COVE | 281 HAWKS POINT |
| 140 TRITON COVE TIDELANDS | 282 NEMAH |
| 141 TRITON COVE SP | 283 NAHCOTTA TIDELANDS |
| 142 KALALOH | 284 LONG ISLAND - DIAMOND POINT |
| | 285 LONG BEACH |
| | 286 LONG ISLAND - PINNACLE ROCK |



Commercial Shellfish Growing Area Classification	Recreational Shellfish Harvesting Beach Status	Wastewater Treatment Plant
Approved	Closed	Recreational Shellfish Harvesting Not Advised
Conditional	Conditionally Open	County
Prohibited	Open	Water
Restricted		Stream

* Smaller areas may have a black outline to improve clarity